

*BONALDO*

# *New COVERS 2019*

---

*Cruise*

Category: *Must*

Composition: 40% PC, 29% VI, 15% PA, 9% PL, 7% WO



MD13



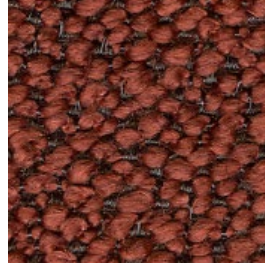
MD14



MD15



MD16



MD17



MD18



MD19



MD20



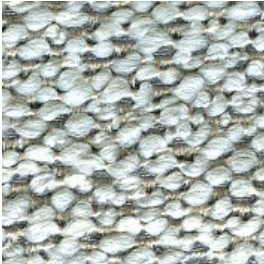
MD21



MD22



MD23



MD24

*Latina*

Category: *Must*

Composition: 58% PC, 21% CO, 17% WO, 4% PL



MC88



MC89



MC90



MC91



MC92



MC93



MC94



MC95



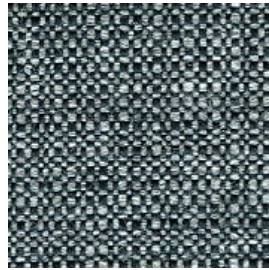
*Ombra*

Category: *Must*

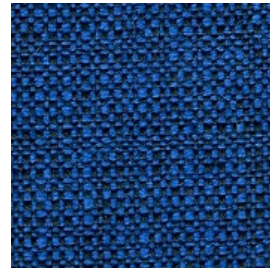
Composition: 53% CO, 37% WO, 10% PA



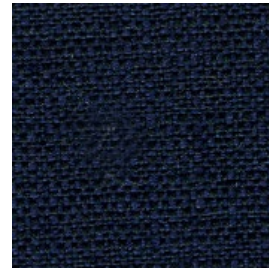
MD01



MD02



MD03



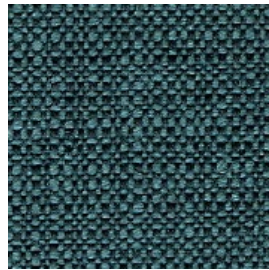
MD04



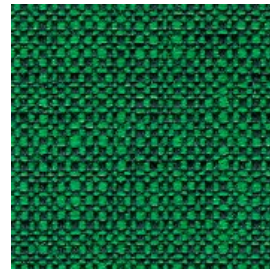
MD05



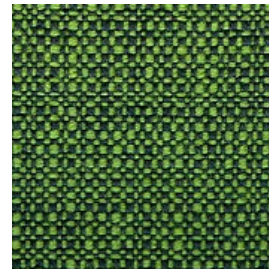
MD06



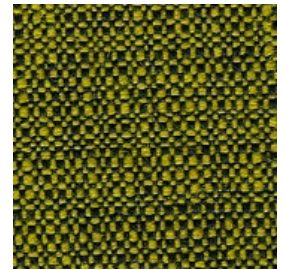
MD07



MD08



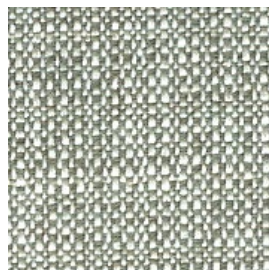
MD09



MD10



MD11



MD12



Devodi

Category: Must - OMBRA Composition: 53% CO, 37% WO, 10% PA

Category: Special - DEVODI Composition: 60% WO, 30% CO, 10% PA



OMBRA MD11



OMBRA MD07



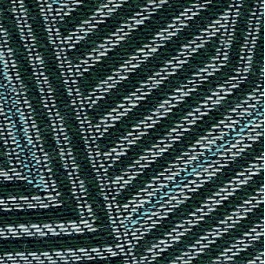
DEVODI SP29



OMBRA MD12



OMBRA MD02



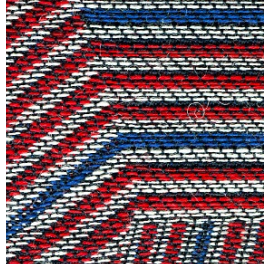
DEVODI SP25



OMBRA MD05



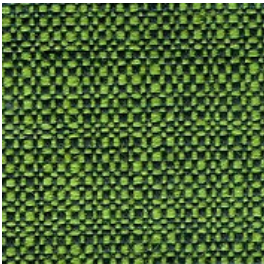
OMBRA MD03



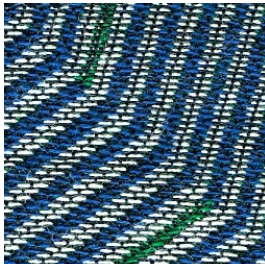
DEVODI SP24



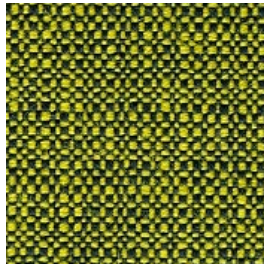
OMBRA MD07



OMBRA MD09



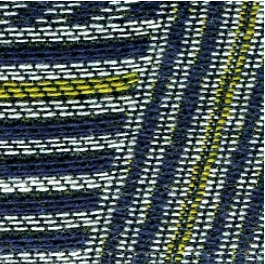
DEVODI SP26



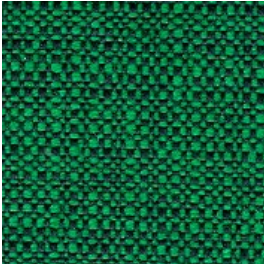
OMBRA MD10



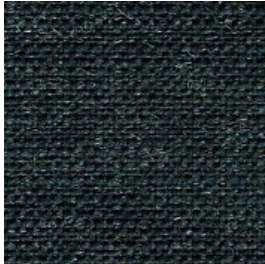
OMBRA MD04



DEVODI SP28



OMBRA MD08



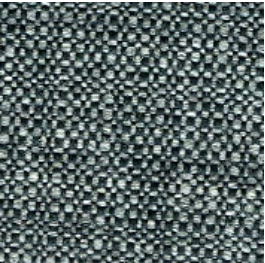
OMBRA MD01



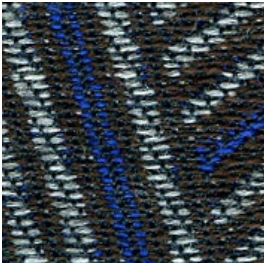
DEVODI SP27



OMBRA MD01



OMBRA MD02



DEVODI SP30



## Brionne

### Category: Special

PARALLEL Composition: 31% WO, 24% PL, 23% PC, 20% CO, 2% PA

RELLA Composition: 28% WO, 26% PL, 24% PC, 18% CO, 4% PA

BRIONNE Composition: 31% PL, 26% WO, 22% PC, 18% CO, 3% PA



PARALLEL SP09



RELLA SP08



BRIONNE SP13



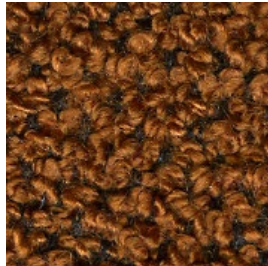
RELLA SP04



PARALLEL SP20



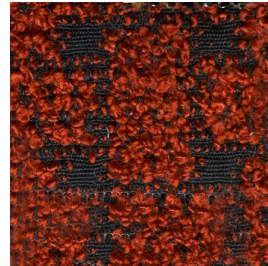
PARALLEL SP14



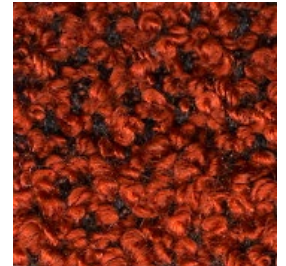
RELLA SP05



BRIONNE SP21



PARALLEL SP10



RELLA SP02



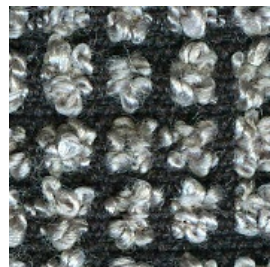
BRIONNE SP17



PARALLEL SP15



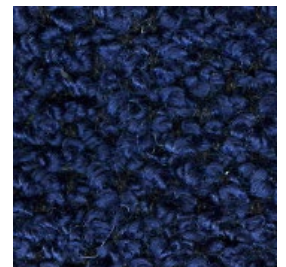
RELLA SP06



BRIONNE SP22



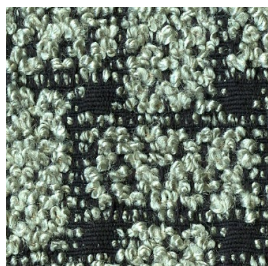
PARALLEL SP11



RELLA SP03



BRIONNE SP18



PARALLEL SP12



RELLA SP01



BRIONNE SP19



PARALLEL SP16



RELLA SP07



BRIONNE SP23



## Samba

Category: Class - CARAVAGGIO Composition: 100% PL

Category: 800 - PLAIN Composition: 100% PL

Category: 800 - STUOIA Composition: 54% PC, 46% PL

Category: 800 - MELANGE Composition: 54% PC, 46% PL



CARAVAGGIO EB24



PLAIN 8D81



STUOIA 8D92



MELANGE 8D72



PLAIN 8D80



CARAVAGGIO EB25



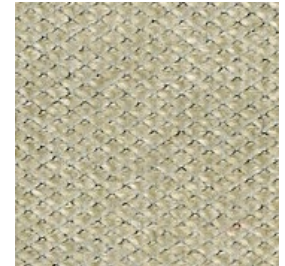
PLAIN 8D84



STUOIA 8D93



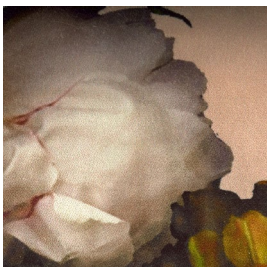
PLAIN 8D83



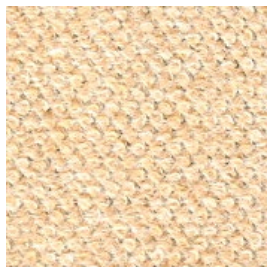
PLAIN 8D82



MELANGE 8D73



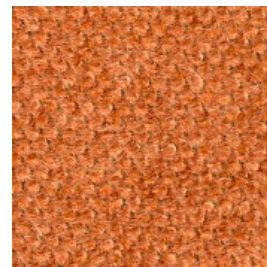
CARAVAGGIO EB26



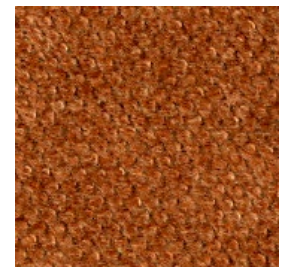
PLAIN 8D87



MELANGE 8D74



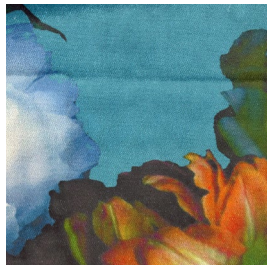
PLAIN 8D86



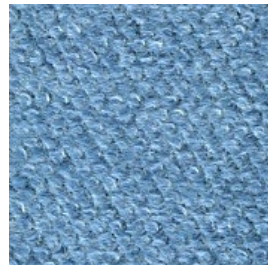
PLAIN 8D85



STUOIA 8D94



CARAVAGGIO EB27



PLAIN 8D89



STUOIA 8D95



MELANGE 8D75



PLAIN 8D88



*Samba*

Category: Class - CARAVAGGIO Composition: 100% PL

Category: 800 - PLAIN Composition: 100% PL

Category: 800 - STUOIA Composition: 54% PC, 46% PL

Category: 800 - MELANGE Composition: 54% PC, 46% PL



CARAVAGGIO EB23



MELANGE 8D71



PLAIN 8D79



PLAIN 8D78



STUOIA 8D91



PLAIN 8D77



STUOIA 8D90



PLAIN 8D76



MELANGE 8D70



June 2019

IT \_ I colori e le finiture visualizzate in questo documento sono puramente indicativi e possono differire dagli originali. L'azienda si riserva il diritto di apportare modifiche ai propri colori di serie in qualsiasi momento e senza alcun obbligo di preavviso.

EN \_ Colours and finishes shown in this document are approximate and may differ from actual ones. The company reserves the right to make modifications to this list at any time and without prior notice.