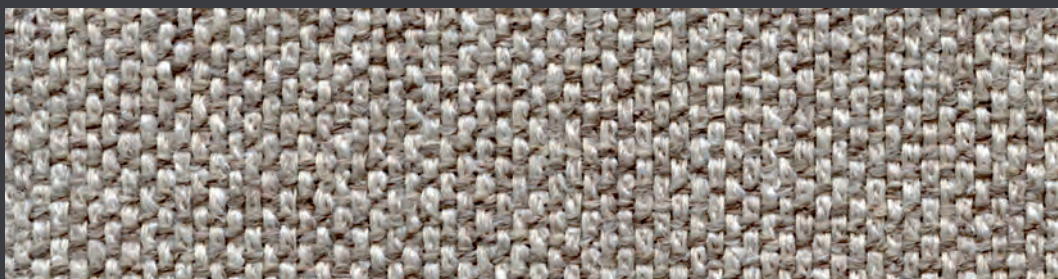
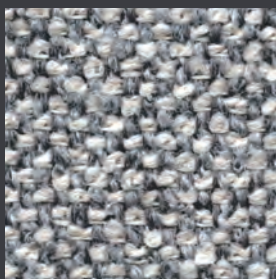


CHARLIE

Cat. 1



12



06



25



39



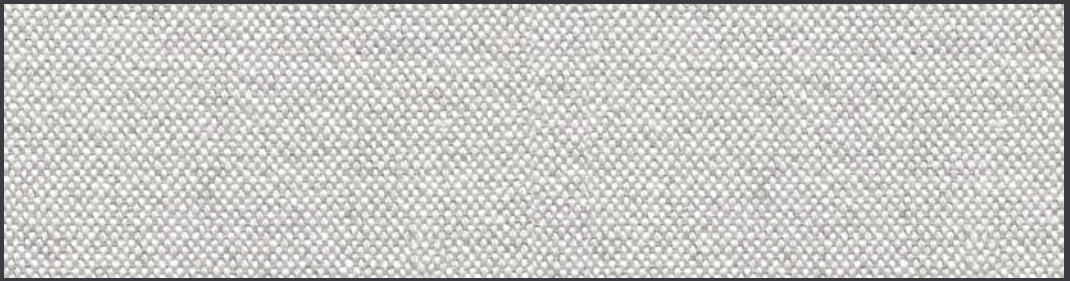
43

Descrizione: **CHARLIE**  
Categoria: **1**  
Composizione: **100% PL**  
Altezza cm: **138/140**  
Peso gr/ml: **590**  
Martindale: **50.000 cicli**  
Pilling: **4/5 cicli**



Description: **CHARLIE**  
Category: **1**  
Composition: **100% PL**  
Height cm: **138/140**  
Weight gr/ml: **590**  
Martindale: **50.000 cycles**  
Pilling: **4/5 cycles**

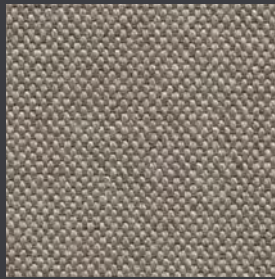




40



08



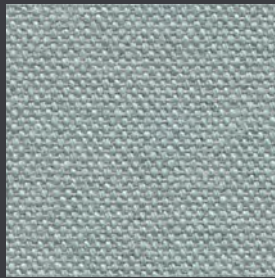
17



30



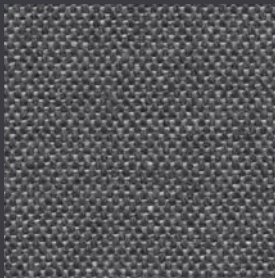
13



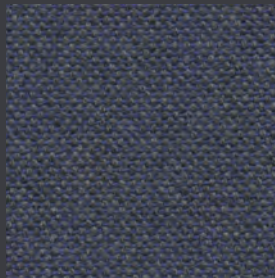
45



28



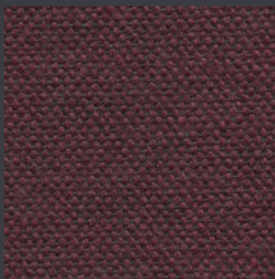
10



15



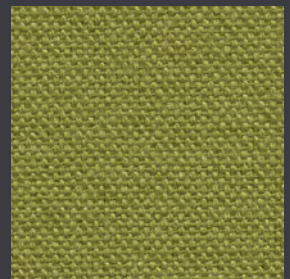
06



23



42



16

Descrizione: **MAIA**

Categoria: **1**

Composizione: **75% CO - 20% PC - 5% A.F.**

Altezza cm: **140**

Peso gr/ml: **460**

Martindale: **30.000 cicli**

Pilling: **3 cicli**



Description: **MAIA**

Category: **1**

Composition: **75% CO - 20% PC - 5% A.F.**

Height cm: **140**

Weight gr/ml: **590**

Martindale: **30.000 cycles**

Pilling: **3 cycles**





SLIM ecopelle

Cat. 1



41



01



07



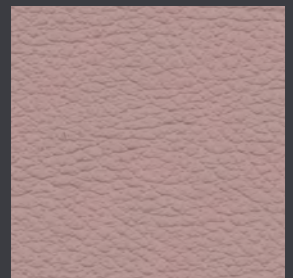
40



17



39



34



25



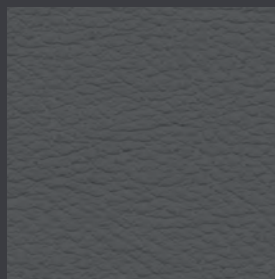
09



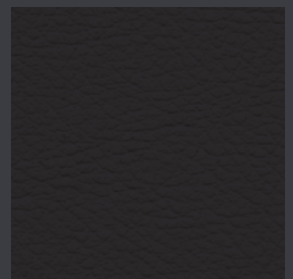
20



06



18



11

Descrizione: **SLIM ecopelle**

Categoria: **1**

Composizione: **85% PCV - 15% PL**

Altezza cm: **140**

Peso gr/ml: **550**

Martindale: **50.000 cicli**

**Manutenzione e Lavaggio:**

spolverare delicatamente e in caso di macchie lievi passare la superficie con un panno umido o con una soluzione di detergente neutro, risciacquando con acqua, senza strizzare. Lasciare asciugare al rovescio evitando l'esposizione diretta alla luce del sole. Stirare al rovescio a bassa temperatura.

Per le macchie localizzate e più ostinate (olio, grasso, cosmetici, inchiostro, caffè, liquori, chewing-gum, ecc.) si consiglia di seguire le seguenti istruzioni: disciogliere tempestivamente la macchia con alcol etilico diluito (liquido incolore) in acqua al 20%, tamponare e trattare successivamente con una soluzione di detergente neutro, risciacquare bene.

Description: **SLIM ecoleather**

Category: **1**

Composition: **85% PCV - 15% PL**

Height cm: **140**

Weight gr/ml: **550**

Martindale: **50.000 cycles**

**Maintenance and Cleaning:**

Dust gently and in case of light stains pass the surface with a damp cloth or a neutral detergent, rinse with water without squeezing. Let the fabric dry inside out avoiding direct exposure to the sunlight. Iron to the reverse at low temperature.

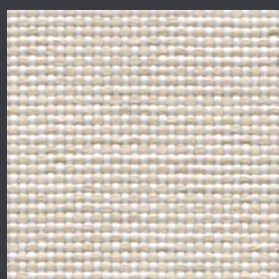
The following instructions are recommended for small located and more obstinate stains (oil, fat, cosmetics, ink, coffee, liquor, chewing-gum etc. ): dissolve immediately with clear ethylic alcohol diluted in water to 20%, dab and then treat with a neutral detergent solution. Rinse abundantly.

TEX

Cat. 1



10



01



17



12



30



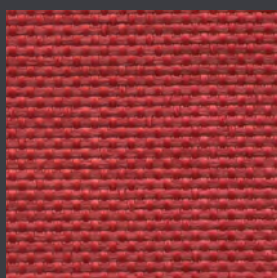
06



18



16



03

Descrizione: **TEX**  
Categoria: **1**  
Composizione: **100% PL**  
Altezza cm: **140**  
Peso gr/ml: **570**  
Martindale: **50.000 cicli**  
Pilling: **4/5 cicli**



Description: **TEX**  
Category: **1**  
Composition: **100% PL**  
Height cm: **140**  
Weight gr/ml: **570**  
Martindale: **50.000 cycles**  
Pilling: **4/5 cycles**



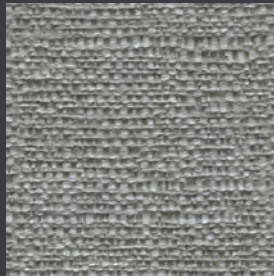




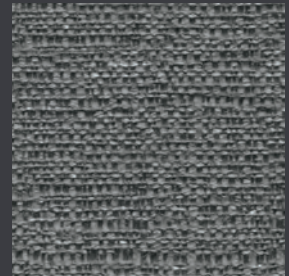
40



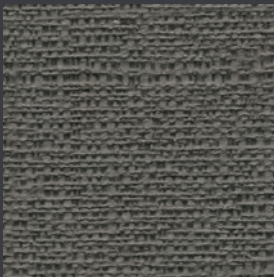
01



62



25



41



13



06



11

Descrizione: **ADAMS**

Categoria: **2**

Composizione: **39% VI - 25% PES - 17% LI - 14% CO - 4% AC - 1% A.F.**

Altezza cm: **140**

Peso gr/ml: **435**

Martindale: **20.000 cicli**

Pilling: **2/3 cicli**



Description: **ADAMS**

Category: **2**

Composition: **39% VI - 25% PES - 17% LI - 14% CO - 4% AC - 1% A.F.**

Height cm: **140**

Weight gr/ml: **435**

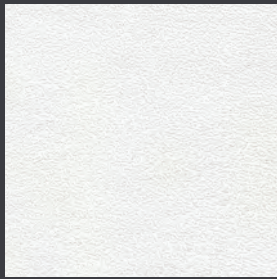
Martindale: **20.000 cycles**

Pilling: **2/3 cycles**

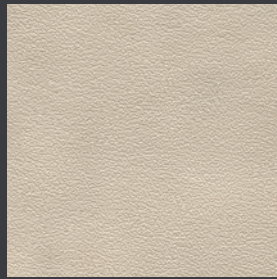




41



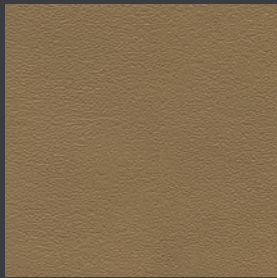
01



07



12



39



13



04



29



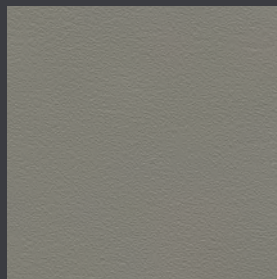
20



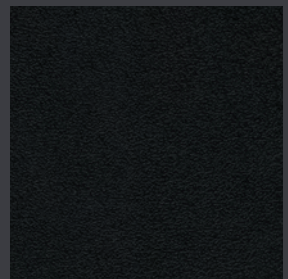
15



06



62



11

Descrizione: **ARTÙ ecopelle**  
Categoria: **2**  
Composizione: **31% CO - 68% PVC - 1% PU**  
Altezza cm: **140**  
Peso gr/ml: **850**  
Martindale: **50.000 cicli**



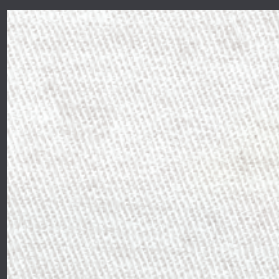
Description: **ARTÙ ecoleather**  
Category: **2**  
Composition: **31% CO - 68% PVC - 1% PU**  
Height cm: **140**  
Weight gr/ml: **850**  
Martindale: **50.000 cycles**



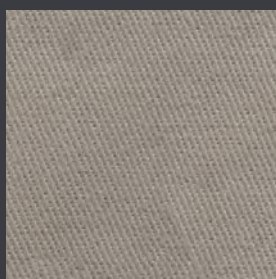




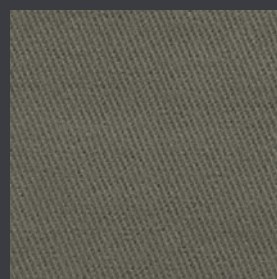
05



01



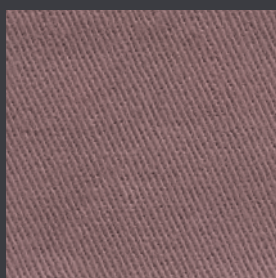
17



30



20



34



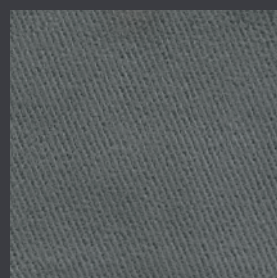
42



29



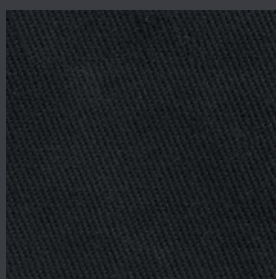
16



10



06



11

Descrizione: **GIOVE**  
Categoria: 2  
Composizione: **100% CO**  
Altezza cm: **140**  
Peso gr/ml: **550**  
Martindale: **30.000 cicli**  
Pilling: **4 cicli**

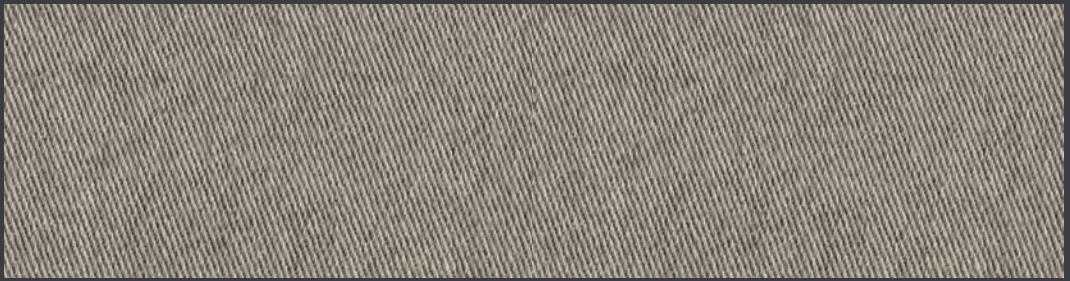


Description: **GIOVE**  
Category: **2**  
Composition: **100% CO**  
Height cm: **140**  
Weight gr/ml: **550**  
Martindale: **30.000 cycles**  
Pilling: **4 cycles**



PURE

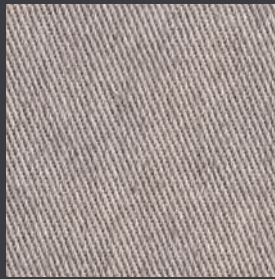
Cat. 2



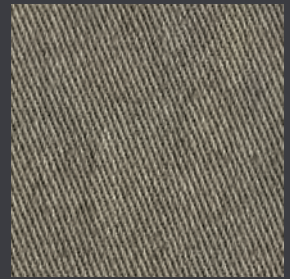
24



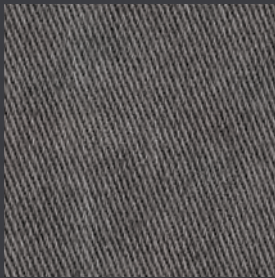
01



12



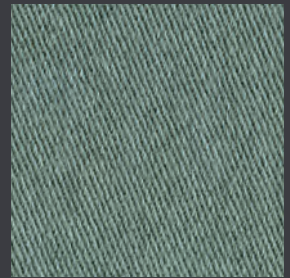
62



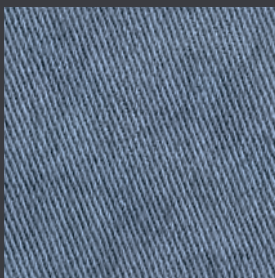
06



65



45



05

Descrizione: **PURE**  
Categoria: **2**  
Composizione: **100% CO**  
Altezza cm: **140**  
Peso gr/ml: **525**  
Martindale: **20.000 cicli**  
Pilling: **ISO 12945 Pt.2**



Description: **PURE**  
Category: **2**  
Composition: **100% CO**  
Height cm: **140**  
Weight gr/ml: **525**  
Martindale: **20.000 cycles**  
Pilling: **ISO 12945 Pt.2**





LUCKY

Cat. 3



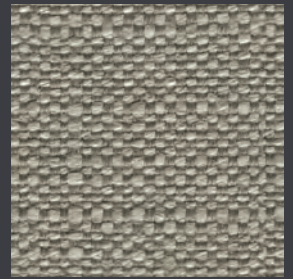
15



07



12



24



25



13



20



05



11

Descrizione: **LUCKY**

Categoria: **3**

Composizione: **46% VI - 35% PL - 19% LI**

Altezza cm: **140**

Peso gr/ml: **536**

Martindale: **30.000 cicli**

Pilling: **3 cicli**



Description: **LUCKY**

Category: **3**

Composition: **46% VI - 35% PL - 19% LI**

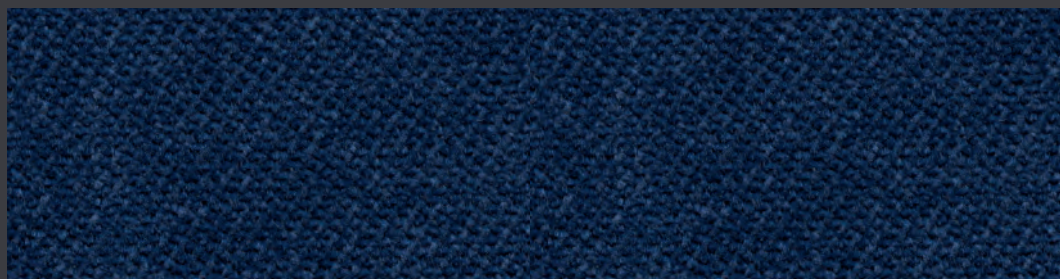
Height cm: **140**

Weight gr/ml: **536**

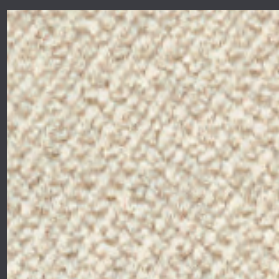
Martindale: **30.000 cycles**

Pilling: **3 cycles**





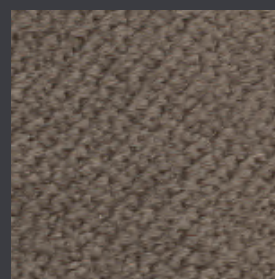
05



17



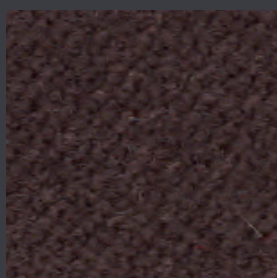
10



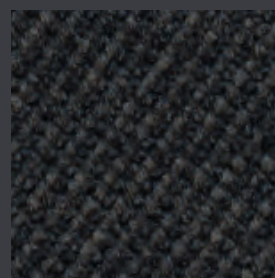
41



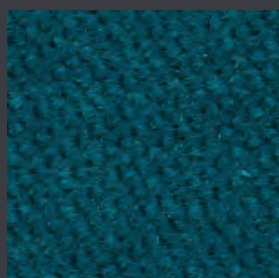
06



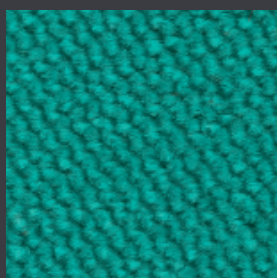
20



38



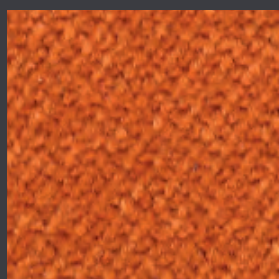
37



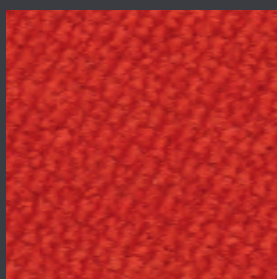
27



16



42



55



33

Descrizione: **LUXOR**  
Categoria: **3**  
Composizione: **100% PL**  
Altezza cm: **140**  
Peso gr/ml: **580**  
Martindale: **50.000 cicli**  
Pilling: **5 cicli**



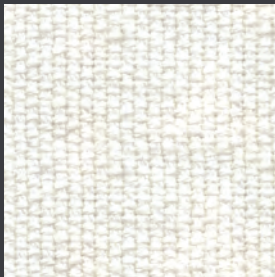
Description: **LUXOR**  
Category: **3**  
Composition: **100% PL**  
Height cm: **140**  
Weight gr/ml: **580**  
Martindale: **50.000 cycles**  
Pilling: **5 cycles**







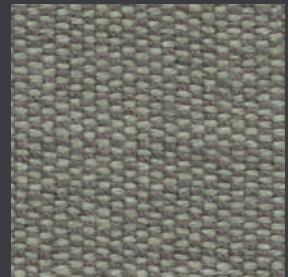
07



01



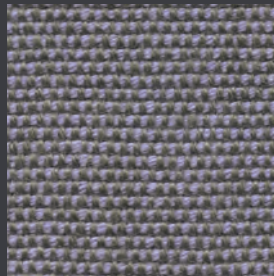
12



54



16



34



13



06



15



41



11

Descrizione: **GINEVRA**

Categoria: **4**

Composizione: **41% LI - 44% CO - 12% PC - 3% AF**

Altezza cm: **140**

Peso gr/ml: **852**

Martindale: **20.000 cicli**

Pilling: **2/3 cicli**



Description: **GINEVRA**

Category: **4**

Composition: **41% LI - 44% CO - 12% PC - 3% AF**

Height cm: **140**

Weight gr/ml: **852**

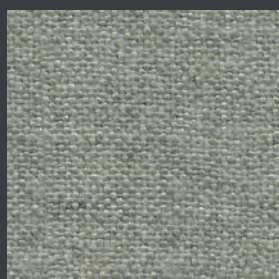
Martindale: **520.000 cycles**

Pilling: **2/3 cycles**

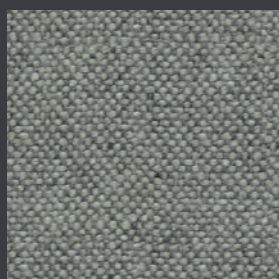




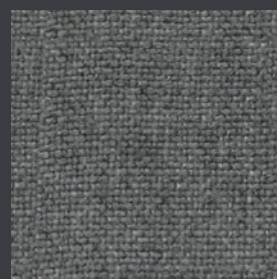
45



08



10



06



12



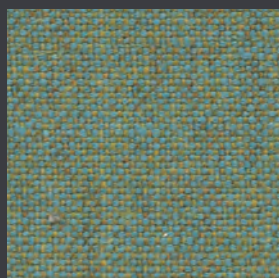
39



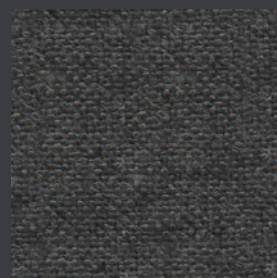
42



13



32



20



15

Descrizione: **KLAUS**

Categoria: **4**

Composizione: **65% LI - 25% WO - 10% PA**

Altezza cm: **140**

Peso gr/ml: **535**

Martindale: **40.000 cicli**

Pilling: **4 cicli**



Description: **KLAUS**

Category: **4**

Composition: **65% LI - 25% WO - 10% PA**

Height cm: **140**

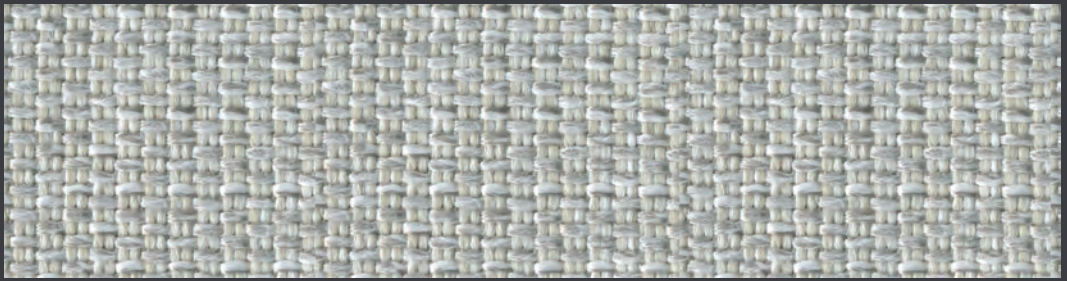
Weight gr/ml: **535**

Martindale: **40.000 cycles**

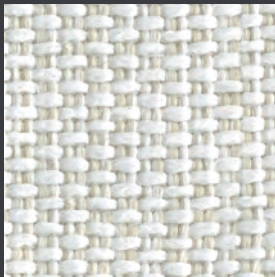
Pilling: **4 cycles**







08



01



12



06



24



30



13



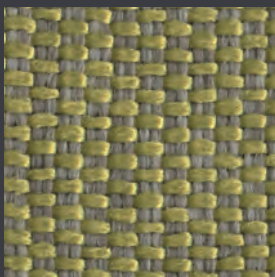
38



27



43



16

Descrizione: **MILO**  
Categoria: **4**  
Composizione: **100% PP**  
Altezza cm: **140**  
Peso gr/ml: **614**  
Martindale: **25.000 cicli**  
Pilling: **4/5 cicli**



Description: **MILO**  
Category: **4**  
Composition: **100% PP**  
Height cm: **140**  
Weight gr/ml: **614**  
Martindale: **525.000 cycles**  
Pilling: **4/5 cycles**



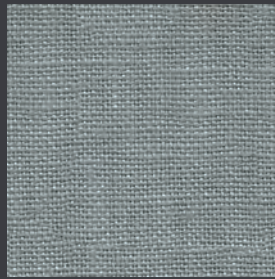




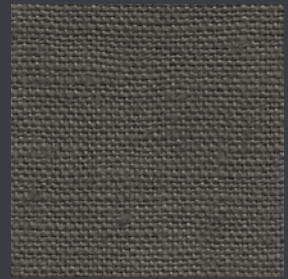
17



01



10



62



13



41



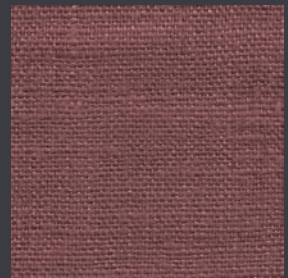
06



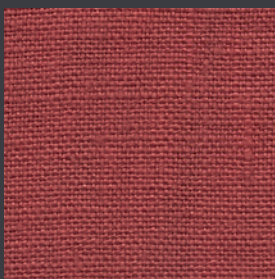
15



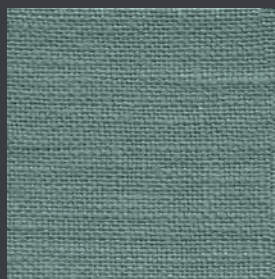
22



33



03



45



37

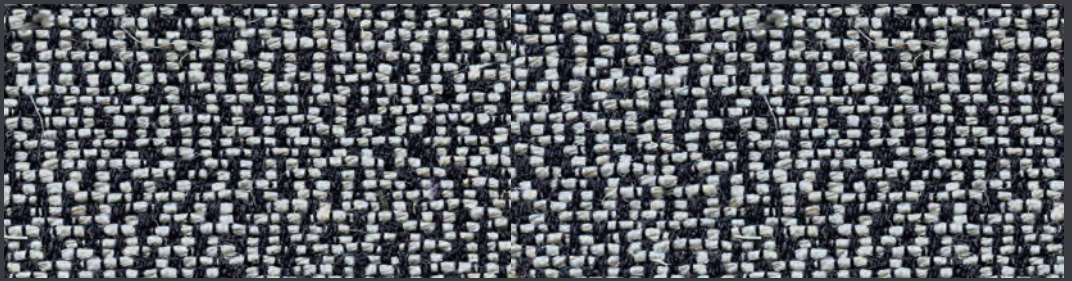
Descrizione: **PATCH**  
Categoria: **4**  
Composizione: **100% LI**  
Altezza cm: **138/140**  
Peso gr/ml: **650**  
Martindale: **20.000 cicli**  
Pilling: **3/4 cicli**



Description: **PATCH**  
Category: **4**  
Composition: **100% LI**  
Height cm: **138/140**  
Weight gr/ml: **650**  
Martindale: **20.000 cycles**  
Pilling: **3/4 cycles**







47



39



03



56



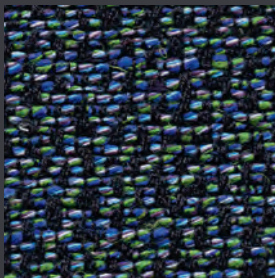
13



21



28



05

Descrizione: **COCO**

Categoria: **4**

Composizione: **25% CO - 25% VI - 15% LI - 35% PL**

Altezza cm: **140**

Peso gr/ml: **640**

Martindale: **30.000 cicli**

Pilling: **3/4 cicli**



Description: **COCO**

Category: **4**

Composition: **25% CO - 25% VI - 15% LI - 35% PL**

Height cm: **140**

Weight gr/ml: **640**

Martindale: **30.000 cycles**

Pilling: **3/4 cycles**



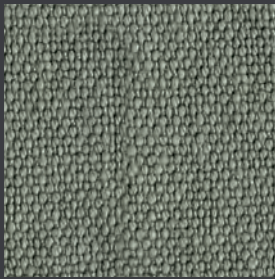


RICE

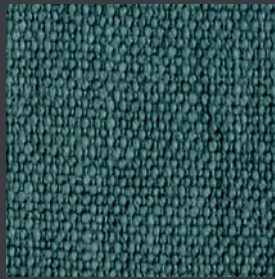
Cat. 4



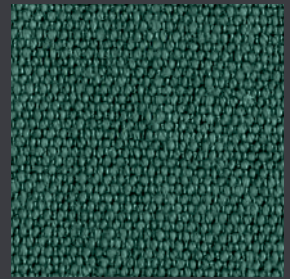
12



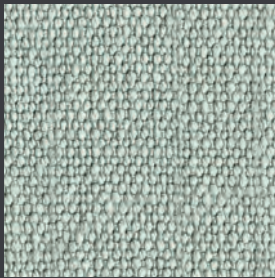
45



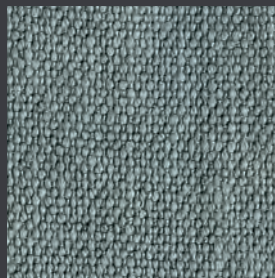
27



37



40



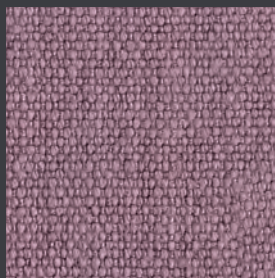
31



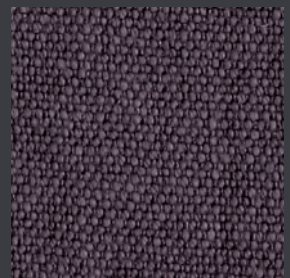
11



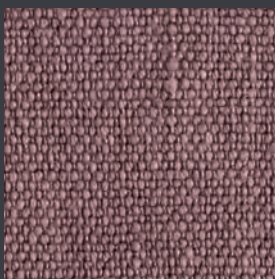
49



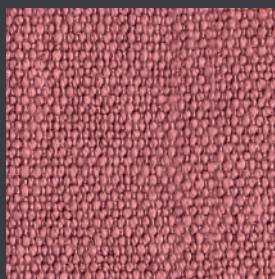
22



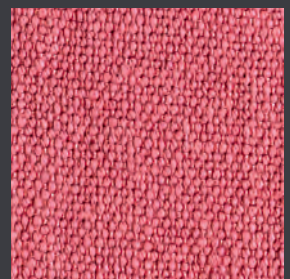
23



42



43



19

Descrizione: **RICE**  
Categoria: **4**  
Composizione: **100% LI**  
Altezza cm: **140**  
Peso gr/ml: **640**  
Martindale: **25.600 cicli**  
Pilling: **3/4 cicli**



Description: **RICE**  
Category: **4**  
Composition: **100% LI**  
Height cm: **140**  
Weight gr/ml: **640**  
Martindale: **25.600 cycles**  
Pilling: **3/4 cycles**







11



01



12



13



40



05



06

Descrizione: **MOOD**

Categoria: **4**

Composizione: **60% CO - 5% PL - 35% VI**

Altezza cm: **140**

Peso gr/ml: **780**

Martindale: **20.000 cicli**

Pilling: **4/5 cicli**



Description: **MOOD**

Category: **4**

Composition: **60% CO - 5% PL - 35% VI**

Height cm: **140**

Weight gr/ml: **780**

Martindale: **20.000 cycles**

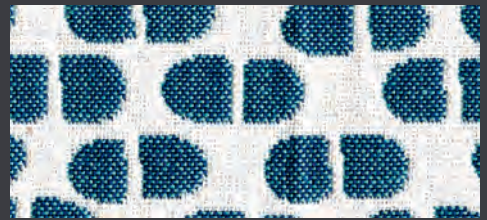
Pilling: **4/5 cycles**







twin 05



twin 40



twin 03



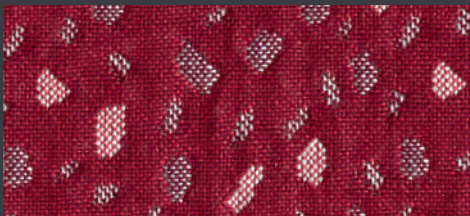
twin 01



stone 05



stone 40



stone 03



stone 01



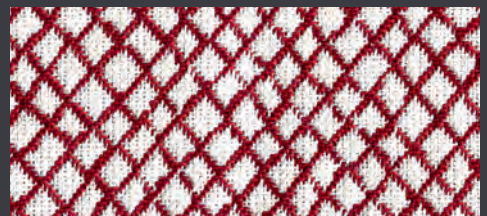
filter 05



filter 40



filter 03



filter 01

Descrizione: **DECOR**  
Categoria: **4**  
Composizione: **90% CO - 10% PA**  
Altezza cm: **140**  
Peso gr/ml: **420**  
Martindale: **35.000 cicli**  
Pilling: **3/4 cicli**



Description: **DECOR**  
Category: **4**  
Composition: **90% CO - 10% PA**  
Height cm: **140**  
Weight gr/ml: **420**  
Martindale: **35.000 cycles**  
Pilling: **3/4 cycles**



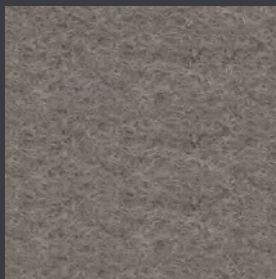


FELTRO

Cat. LAB



21



30



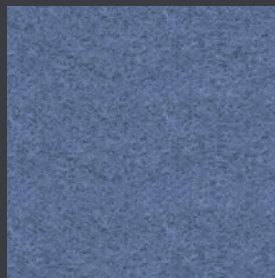
61



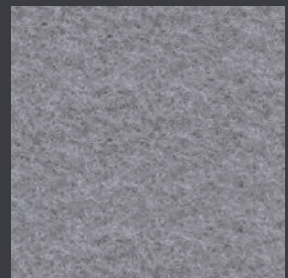
16



31



15



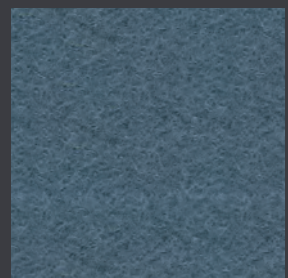
10



06



27



57



42



55



43

Descrizione: **FELTRO**

Categoria: **LAB**

Composizione: **100% WO**

Altezza cm: **140**

Peso gr/ml: **800**

Martindale: **50.000 cicli**

Pilling: **4 cicli**

#### **Smacchiatura**

Eliminare sempre le macchie al più presto possibile. La maggior parte delle macchie e dello sporco si può eliminare utilizzando del normale detergente a pH neutro diluito in abbondante acqua tiepida.

Importante:

- Assorbire inizialmente la maggior quantità possibile di liquido utilizzando della carta asciugatutto non colorata o uno straccetto.
- Se la macchia si è seccata asportare quanto più sia possibile utilizzando un aspirapolvere.
- Strofinare con attenzione servendosi di uno straccio bianco e pulito.
- Premere uno straccetto asciutto o della carta asciugatutto non colorata contro la stoffa ogni volta che si aggiunge dell'acqua in modo da assorbire l'umidità e lo sporco.
- Per l'ultimo lavaggio utilizzare acqua pulita senza sapone.

Dopo il lavaggio con acqua, la zona in questione potrebbe apparire più scura della stoffa circostante. Questo effetto, tuttavia si attenerà con l'andare del tempo.

Description: **FELTRO**

Category: **LAB**

Composition: **100% WO**

Height cm: **140**

Weight gr/ml: **800**

Martindale: **50.000 cycles**

Pilling: **4 cycles**

#### **Stain removal**

Always remove stains as quickly as possible.

Most stains and dirt can be removed using an ordinary pH-neutral detergent diluted in lukewarm water at normal strength (follow the directions on the bottle).

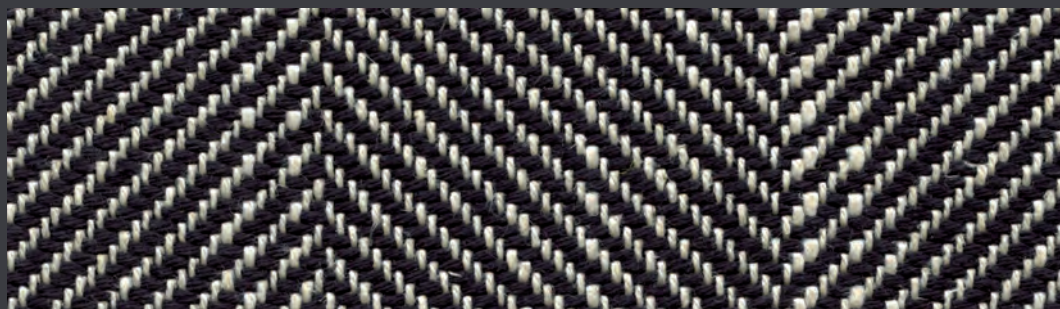
Important:

- First soak up as much of the liquid as possible with white kitchen roll or a tea towel.
- If the stain has dried on, remove as much of it as possible by vacuuming.
- Rub carefully with a clean, white cloth.
- Press the fabric with a dry tea towel or piece of white kitchen roll every time water is added so as to soak up moisture and dirt.
- Use clean water without any detergent for the final clean.

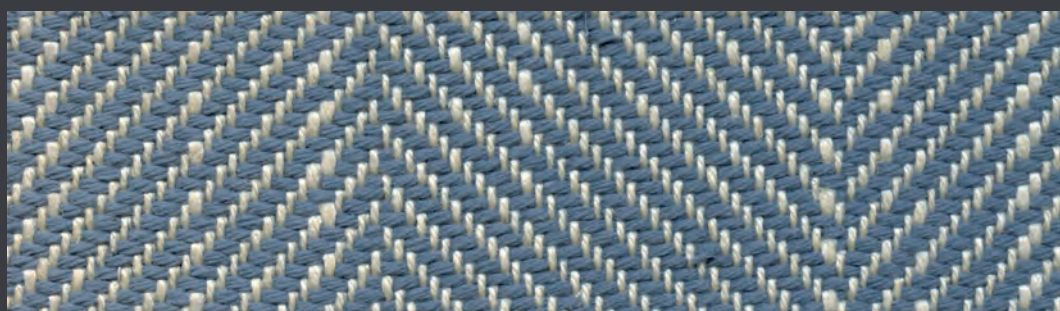
The area may appear darker than the surrounding fabric after being cleaned with water. This will become less noticeable over time.

PLUG

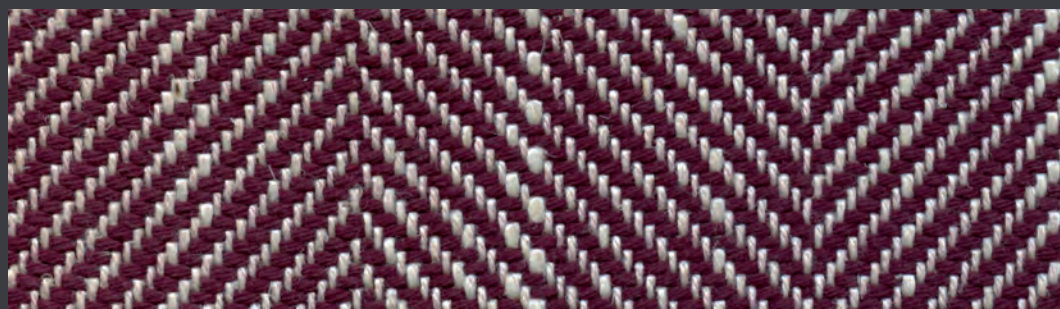
Cat. LAB



11



15



23

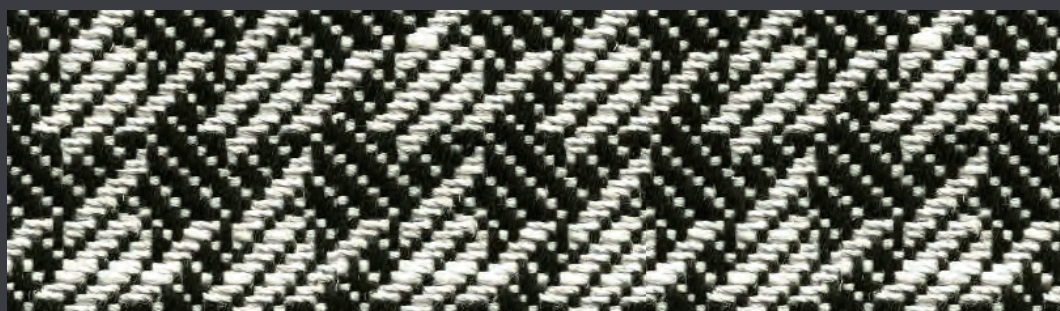
Descrizione: **PLUG**  
Categoria: **LAB**  
Composizione: **43% CO - 40% LI - 17% VI**  
Altezza cm: **140**  
Peso gr/ml: **1017**  
Martindale: **24.000 cicli**  
Pilling: **4 cicli**



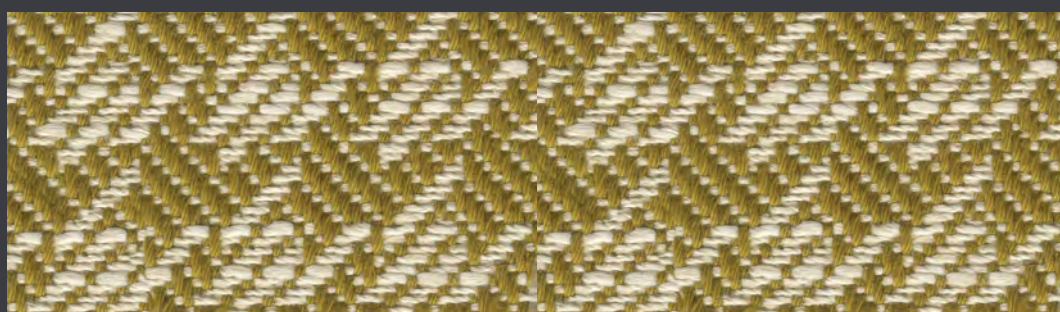
Description: **PLUG**  
Category: **LAB**  
Composition: **43% CO - 40% LI - 17% VI**  
Height cm: **140**  
Weight gr/ml: **1017**  
Martindale: **24.000 cycles**  
Pilling: **4 cycles**



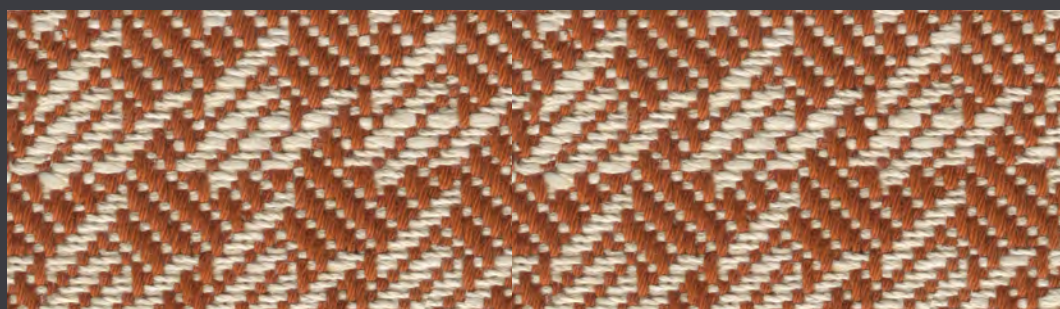




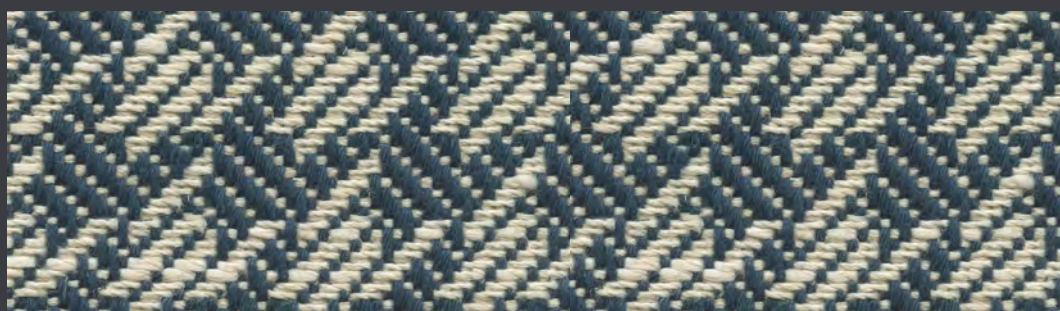
11



16



42



27

Descrizione: **TRACE**  
Categoria: **LAB**  
Composizione: **43% CO - 40% LI - 17% VI**  
Altezza cm: **140**  
Peso gr/ml: **1017**  
Martindale: **24.000 cicli**  
Pilling: **4 cicli**



Description: **TRACE**  
Category: **LAB**  
Composition: **43% CO - 40% LI - 17% VI**  
Height cm: **140**  
Weight gr/ml: **1017**  
Martindale: **24.000 cycles**  
Pilling: **4 cycles**

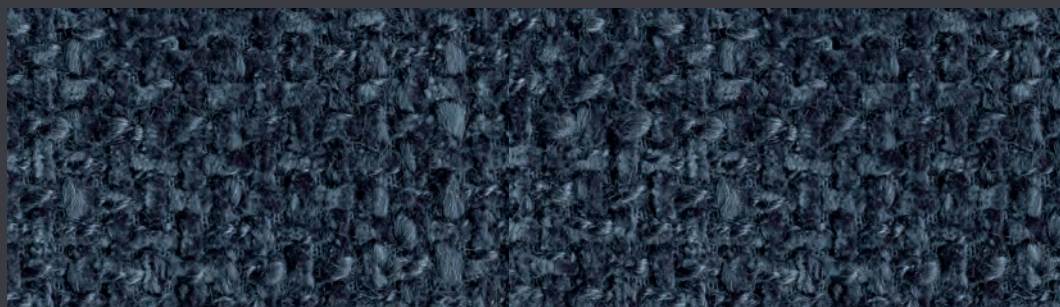




12



49



05



21



Descrizione: **MEMORY**

Categoria: **LAB**

Composizione: **57% AC - 37% PES - TESTURIZZATO 6% VI**

Altezza cm: **140**

Peso gr/ml: **920**

Martindale: **23.000 cicli**

Pilling: **4/5 cicli**



Description: **MEMORY**

Category: **LAB**

Composition: **57% AC - 37% PES - TESTURIZZATO 6% VI**

Height cm: **140**

Weight gr/ml: **920**

Martindale: **23.000 cycles**

Pilling: **4/5 cycles**



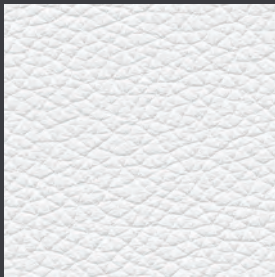


NILES pelle

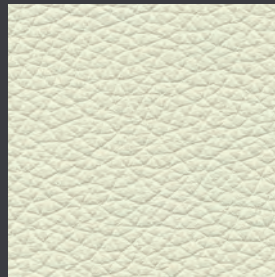
Cat. PELLE



17



01



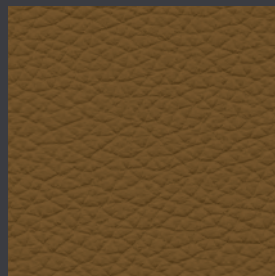
07



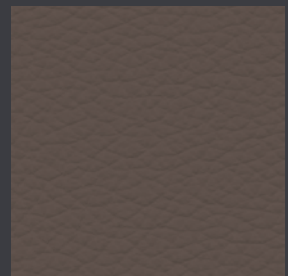
02



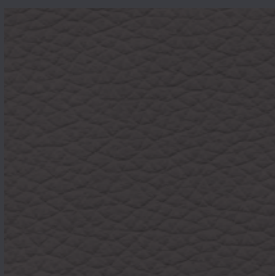
62



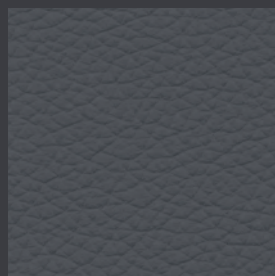
13



04



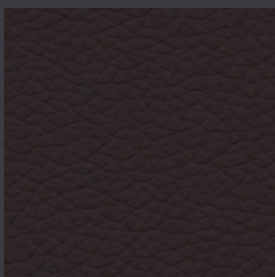
18



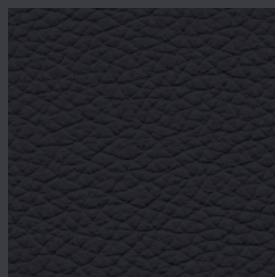
06



20



68



11

Descrizione: **NILES pelle**

Categoria: **PELLE**

Tipologia: **Pigmentata - Fiore Corretto - Tintura all'anilina passante in botte**

Materia prima: **Pelle bovina di origine europea**

Spessore: **1,0 - 1,2**

Concia: **Ai sali di cromo**

Pulizia e Manutenzione:

Evitare la luce diretta del sole

Eventuali macchie si possono eliminare usando un panno inumidito con acqua e sapone neutro

Evitare l'esposizione a fonti di calore

Asciugare immediatamente dopo il trattamento

Spolverare regolarmente la pelle con un panno morbido ed asciutto

Non strofinare, ma tamponare delicatamente dai bordi al centro della macchia

Description: **NILES pelle**

Category: **LEATHER**

Leather Types: **Pigmented - Corrected Grain - Through dyeing aniline**

Raw Material: **European raw hides**

Thickness: **1,0 - 1,2**

Tannage: **Chromium salt**

Cleaning and maintenance:

Avoid placing leather near direct sun

Spots can be washed off using a lightly damp cloth with mild soap

Keep the leather away from heat sources

Dry immediately after the treatment

Dust regularly with a soft and dry cloth

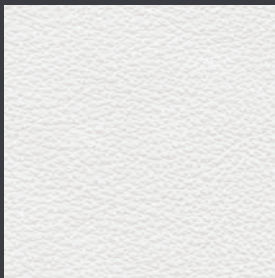
Do not rub. Use a circular motion working toward the centre of the stain

ARES pelle

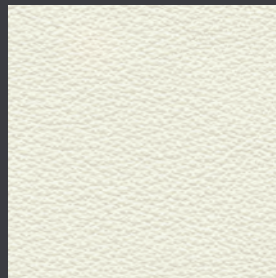
Cat. PELLE EXTRA



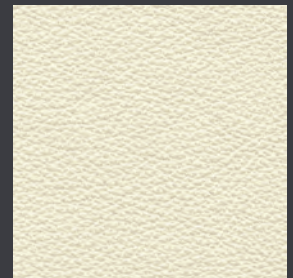
13



01



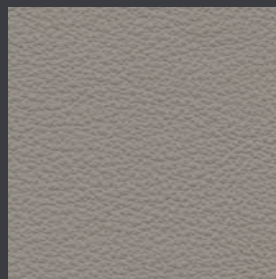
07



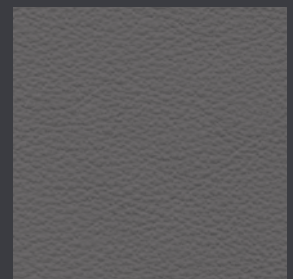
17



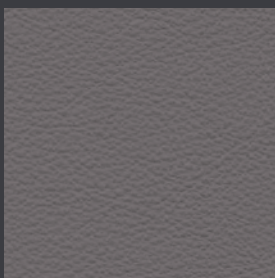
10



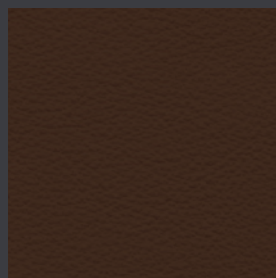
30



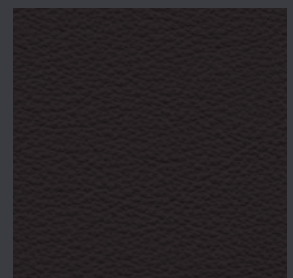
06



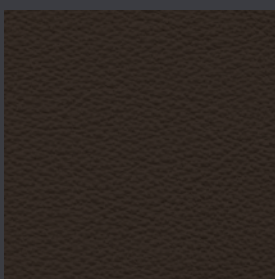
41



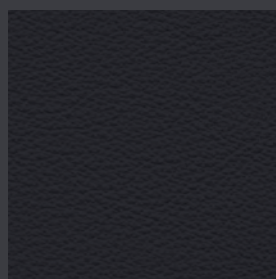
09



38



20



11

Descrizione: **ARES pelle**

Categoria: **PELLE EXTRA**

Tipologia: **Pigmentata - Fiore Corretto - Tintura all'anilina passante in botte**

Materia prima: **Pelle bovina di origine europea**

Spessore: **1,2 - 1,3**

Concia: **Ai sali di cromo**

Pulizia e Manutenzione:

Evitare la luce diretta del sole

Eventuali macchie si possono eliminare usando un panno inumidito con acqua e sapone neutro

Evitare l'esposizione a fonti di calore

Asciugare immediatamente dopo il trattamento

Spolverare regolarmente la pelle con un panno morbido ed asciutto

Non strofinare, ma tamponare delicatamente dai bordi al centro della macchia

Description: **ARES pelle**

Category: **EXTRA LEATHER**

Leather Types: **Pigmented - Corrected Grain - Through dyeing aniline**

Raw Material: **European raw hides**

Thickness: **1,2 - 1,3**

Tannage: **Chromium salt**

Cleaning and maintenance:

Avoid placing leather near direct sun

Spots can be washed off using a lightly damp cloth with mild soap

Keep the leather away from heat sources

Dry immediately after the treatment

Dust regularly with a soft and dry cloth

Do not rub. Use a circular motion working toward the centre of the stain